



DRI0044

DFRobot

[Buy Now](#)



Looking for a discount?

[Check out our current promotions!](#)

Give us a call

1-855-837-4225

International: 1-415-281-3866

Email Us

Sales and New Orders: sales@verical.com

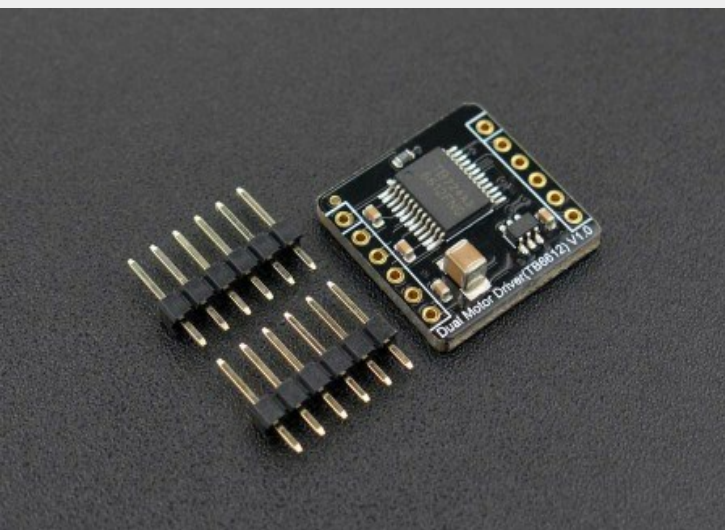
Order Support: support@verical.com

Suppliers: [Visit our seller page](#)

Company Address

Arrow Electronics, Inc
9201 East Dry Creek Road
Centennial, CO 80112

Home / 2x1.2A DC Motor Driver (TB6612FNG)



2x1.2A DC Motor Driver (TB6612FNG)

SKU:DRI0044 Brand:DFRobot
Reward Points:5

Tags:

DRI0044 TB6612 TB6612FNG motor driver

DC motor driver motor driver IC

Related Categories

All Products Motors & Actuators & Drivers

DC Motor Drivers Modules



ADD TO WISHLIST



Frequently Bought Together

	+		+		+		
2x1.2A DC Motor Driver (TB6612FNG)		Micro Metal Gearmotor 50:1		DFRduino UNO R3 - Arduino Comp.....		Gravity IO Expansion Shield fo.....	
<input type="checkbox"/>		<input type="checkbox"/>		<input type="checkbox"/>		<input type="checkbox"/>	

You have chosen: 1
Total amount:

BUY NOW

INTRODUCTION

This DFRobot micro dual way DC motor driver is design based on TB6612FNG motor driver IC. It inherits DFRobot L298N motor control logic, which only need four pins to drive 2 motors. Compared with the IC Breakout, it saves two precious [GPIO](#) resource, especially in [Arduino UNO board](#).

TB6612FNG is a dual-channel full-bridge drive chip. The maximum continuous drive current of single channel can reach 1.2A, peak value 2A/3.2A (continuous pulse / single pulse), which can drive some micro [DC motors](#). The control logic is similar to L298n, and the code can be directly compatible with the DFRobot L298N motor driver. Standard XH2.54 pin can be inserted directly into the breadboard. It is a good choice for DIY project or product developments.

SPECIFICATION

- VCC Operating Voltage: 2.7V~5.5V
- VM Input Power: 2.5V~12V
- Driver Channel: 2 channel
- Output Current: 1.2A (single-channel continuous drive current)
- Start / Peak Current: 2A (continuous pulse) / 3.2A (single pulse)
- Dimension: 0.79 x 0.77(in) / 20 x 19.50(mm)

DOCUMENTS

[Product wiki](#)
[More Documents](#)

SHIPPING LIST

- 2x1.2A DC Motor Driver (TB6612FNG) x1
- XH2.54-6Pin x2

REVIEW

0 Comments DFRobot

1 Login



Start the discussion...

Be the first to comment.

ALSO ON DFRobot

LattePanda Alpha 8G/64GB – A Tiny Windows / Linux Mini PC - DFRobot

17 comments · 2 months ago

나기용 — If I use m.2 ssd, can I use multiboot(ubuntu & windows 10)?

USB Charger for 7.4V LiPo Battery

8 comments · 2 months ago

DFRobot Support — You can google "DC2.1 battery" to see if can find any available battery.

Gravity: I2C 3.7V Li Battery Fuel Gauge

4 comments · a month ago

DFRobot Support — Yes, it is to protect charging process of the battery

Pre-order LattePanda Latest Version Now - DFRobot

2 comments · 2 months ago

Monty Kemp — 800 is the Alpha with 8GB RAM no EMMC. The 864 is a Alpha with 8 GB RAM and 64GB EMMC. The 400 series is the delta which has a Celeron CPU instead of a M3, ...

Subscribe Add Disqus to your site Disqus' Privacy Policy

DISQUS

Recently Viewed Items and Featured Recommendations

1/2 < >



LattePanda - A Powerful Window.....



LattePanda - A Powerful Window.....



LattePanda 2GB/32GB - A Powerf.....

Sign up for exclusive offers!

Your email address



Like us on



INFORMATION

- About Us
- Warranty
- Privacy Policy
- Shipping
- Payment
- FAQ

CUSTOMER SERVICE

- DFRobot Distributors
- Contact us
- Site Map

MY ACCOUNT

- Affiliates
- Specials