



**DRI0039**

DFRobot

[Buy Now](#)



Looking for a discount?

[Check out our current promotions!](#)

Give us a call

**1-855-837-4225**

International: 1-415-281-3866

## Email Us

Sales and New Orders: [sales@verical.com](mailto:sales@verical.com)

Order Support: [support@verical.com](mailto:support@verical.com)

Suppliers: [Visit our seller page](#)

## Company Address

Arrow Electronics, Inc  
9201 East Dry Creek Road  
Centennial, CO 80112

Register to Get  \$10 Shipping Coupon





LOGIN/SIGN UP

HOME COMMUNITY **NEW** FORUM WIKI BLOG PRODUCT LINES ▾

EDUCATION

\$USD

WISH LIST

Modules / [Motors & Actuators & Drivers](#) / [DC Motor Drivers](#) / Quad DC Motor Driver Shield for Arduino

# Quad DC Motor Driver Shield for Arduino

SKU:DRI0039

Brand:DFRobot

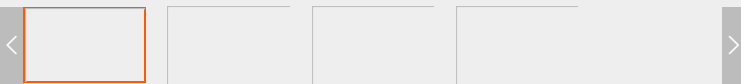
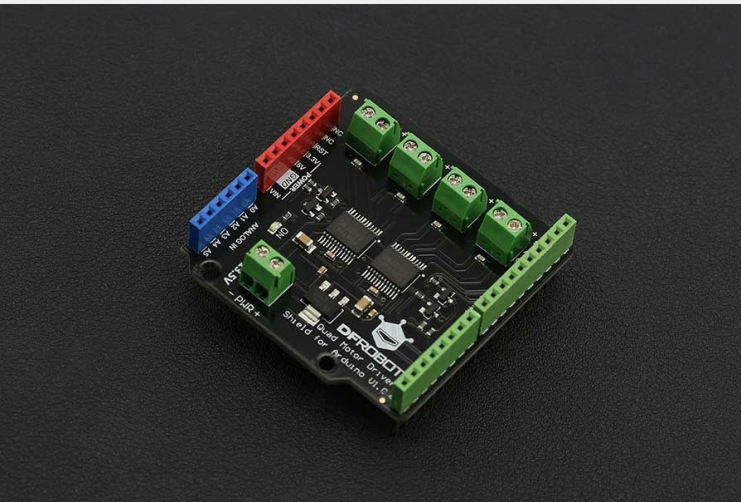
Reward Points: 149

Quantity Based

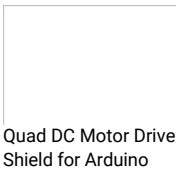
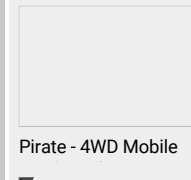
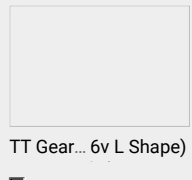
QTY	DISCOUNT
5-9	
10-49	
50+	

Quantity:  -  +

ADD TO CART

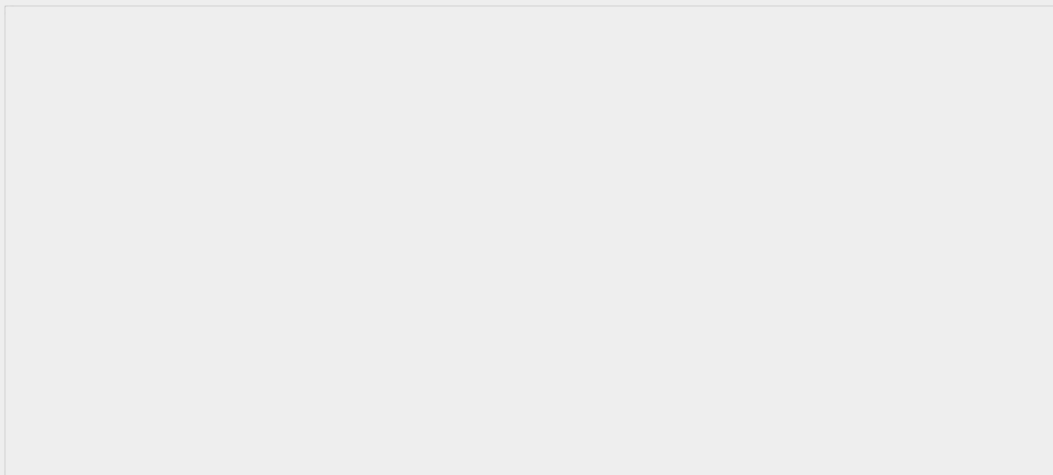


## Frequently Bought Together

	+		+		=	 You have chosen: 0 Total amount: <b>BUY IT NOW</b>
--	---	---	---	---	---	---

## INTRODUCTION

The latest quad motor driver shield for Arduino, compatible with 5V/3.3V Arduino controller, can control up to four DC motors with 8 pins at the same time. The shield supports PWM speed control and polarity control. The driver shield includes two TB6612FNG motor driver chips, compared with the traditional L298N chip, efficiency is improved and the component size also greatly reduced. The chip doesn't heat in to the rated range, and a single path maximum output 1.2A continuous current. The module includes a built-in low voltage detection circuit and thermal shutdown protection circuit, which is safe and reliable. This module is suitable for all kinds of DIY production.



[Click to See Motor Drive Expansion Board selection Guide](#)

## SPECIFICATION

- VM Motor Power Supply: 2.5 V ~ 13.5 V
- VCC Logic Power Supply: 2.7 ~ 5.5 V
- Output Current: 1.2A continuous current (per channel)
- Start/Peak Current: 2A (continuous pulse) / 3.2A (single pulse)
- Arduino Control Port: Digital pins 3, 4, 5, 6, 7, 8, 11, 12
- Working Temperature: -20 ~ 85 °C
- Dimensions: 53mm x 52mm/2.09 x 2.05'
- Weight: 24g

## DOCUMENTS

- [Product WIKI](#)
- [More Documents](#)

## SHIPPING LIST

- Quad Motor Driver Shield for Arduino x1

## REVIEW

## FAQ

13 Comments DFRobot Disqus' Privacy Policy

Login ▾

Recommend 2 Tweet Share

Sort by Best ▾

n the discussion...

**Dino** • a year ago —  
 Is Start/Peak Current per channel? Or is that it's max input current? ▶  
 ^ • Reply • Share >  
 ↓

**DFRobot Support** Mod → Dino • a year ago —  
 Just need to provide a battery that can reach the starting current. ▶  
 ^ • Reply • Share >  
 ↓

**blank** • a year ago —  
 Does it have to use pin 7 and 8? Or can I reassign it in the code to other digital pins? ▶  
 ^ • Reply • Share >  
 ↓

**DFRobot Support** Mod → blank • a year ago —  
 Yes, pin7 and pin8 are used to control the steering of M3 and M4. Sorry you can't reassign it in the code. ▶  
 ^ • Reply • Share >  
 ↓

**Kore** • 2 years ago —  
 what is QuadMotorDriverShield.ino??  
 should i download that?? ▶  
 ^ • Reply • Share >  
 ↓

**DFRobot Support** Mod → Kore • 2 years ago —  
 It is the sample code of using the shield. You can use it to run the shield. ▶  
 ^ • Reply • Share >  
 ↓

**Cassé Hugues** • 2 years ago —  
 Does this shield also power up the Arduino board ? Or do I need a second power source for the Arduino board ? ▶  
 ^ • Reply • Share >  
 ↓

**DFRobot Support** Mod → Cassé Hugues · 2 years ago

No, the power jack only gives the power for the motors, it can't power Arduino board.

↑ · Reply · Share >



**xaris katsidaki** · 3 years ago

can i use the 5v pin to power a lidar through the shield or there will be problems with the currents?

↑ · Reply · Share >



**DFRobot Support** Mod → xaris katsidaki · 3 years ago

What kind of lidar are you using?

↑ · Reply · Share >



**ADNAN ALTURKMANI** · 4 years ago

is it work with arduino mega and how many PWM pins will be available after add it

↑ · Reply · Share >



**DFRobot Support** Mod → ADNAN ALTURKMANI · 4 years ago

Yes, of course. There will be 4 ports, digital pin 2, 9, 10, 13 available as PWM after adding it.

↑ · Reply · Share >



**Andrew Mac** · 3 years ago

Does this motor shield allow smaller motors like 3 volt DC to run, or will it burn out?

↑ · Reply · Share >



Subscribe Add Disqus to your site Do Not Sell My Data

**DISQUS**

### Sign up for exclusive offers!

Your email address



### Like us on



#### INFORMATION

- About Us
- Warranty
- Privacy Policy
- Shipping
- Payment
- FAQ

#### CUSTOMER SERVICE

- DFRobot Distributors
- Contact us
- Site Map

#### MY ACCOUNT

- Affiliates
- Specials
- Coupon